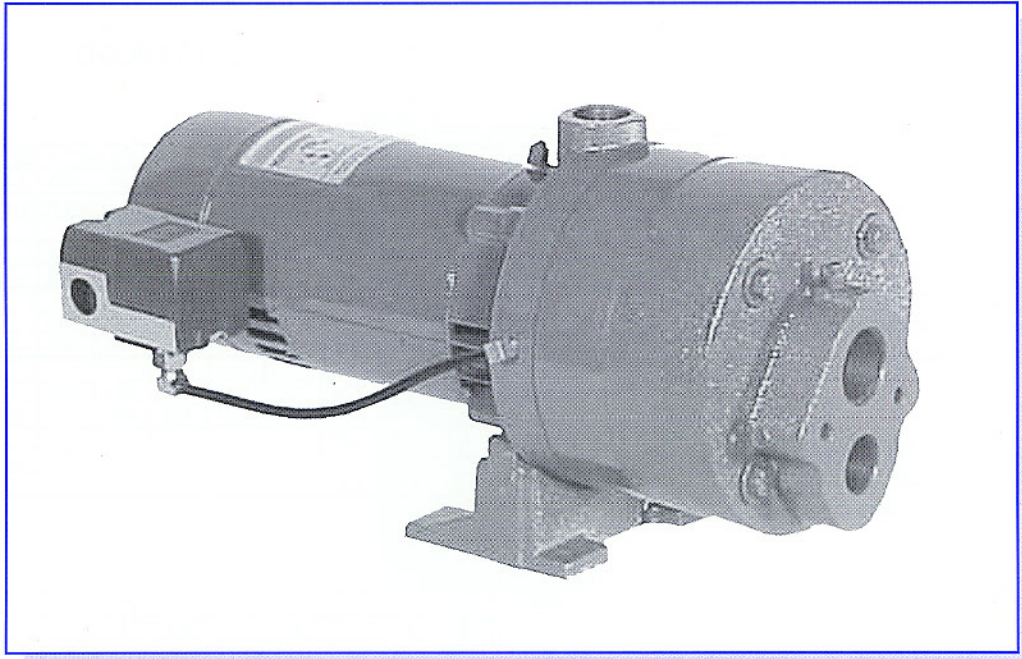


# Betta FLO

## MSH SERIES: CONVERTIBLE MULTI-STAGE JET PUMPS



MSH series are available in a wide range of models from 3/4 thru 2HP. Betta Flo pumps are designed to provide trouble free economical service for years to come. Impellers are available in Brass or glass filled NORYL®. Pumps feature a versatile "bolt-on" jet for a wide range of applications. Pumps are close mounted to NEMA "J" electric motors.

### PERFORMANCE RATINGS

MODEL	ORDER No.	HP	SINGLE PHASE Volts.	NPT INCH		TUBE & NOZZLE NUMBER	DISCHARGE PRESSURE PSI	DEPTH TO WATER Feet					WEIGHT Lbs.
				Suct.	Disc.			5	10	15	20	25	
								CAPACITY - U.S. GALLONS PER HOUR					
MSH75	1720	3/4	230/115	1 1/4	1	80170	20	1350	1050	920	720	580	55
	MSH75B						1722	30	1260	1040	910	710	
							40	1150	1030	890	690	560	57
							50	900	1020	880	680	550	
MSH100	1724	1	230/115	1 1/4	1	80190	20	1410	1410	1400	1200	870	57
	MSH100B						1726	30	1410	1400	1390	1120	
							40	1410	1390	1370	1060	860	58
							50	1410	1390	1360	1050	860	
MSH150	1728	1 1/2	230/115	1 1/4	1	80210	30	1800	1750	1440	1440	1190	66
	MSH150B						1730	40	1790	1690	1420	1420	
							50	1790	1650	1410	1410	900	68
							60	1790	1600	1390	1380	900	
MSH200	1732	2	230	1 1/4	1	80210	40	1800	1790	1780	1600	1400	72
	MSH200B						1734	50	1800	1790	1780	1600	
							60	1800	1790	1780	1600	1300	75

"B" Models are equipped with brass impeller.

*Specifications are subject to change without notice.*



## MSH SERIES: CONVERTIBLE MULTI-STAGE JET PUMPS

### PERFORMANCE RATINGS

#### QUALITY FEATURES:

##### PRESSURE SWITCHES:

Heavy-duty pressure switch has been selected to conform to rigid specifications for precision, no-drift operation. Standard features include straight through wiring, rustproof cover and simple adjustment.

##### DIFFUSERS:

The unique diffuser is cast iron accurately-engineered, smooth water passages for peak efficiency and economy in operation.

##### IMPELLERS:

Closed impeller design. Impellers are Brass or molded Noryl® for peak efficiency. This design assures smooth performance.

##### MECHANICAL SEALS:

Carbon/Ceramic faces, Buna elastomers, and 300 series stainless steel.

##### ELECTRIC MOTORS:

NEMA "J" standard single phase, 1/2 to 1-1/2HP are dual voltage, with voltage change switch, 2HP are 230V., 3500RPM, 60Hz, capacitor start, dual ball bearings, built in overload with automatic reset.

##### REGULATING VALVE:

Efficient heavy-duty regulator, adjustable to varying pumping conditions. Regulators are not required on shallow well application.

##### GASKETS:

All pumps feature the proper gasket for better sealing and simplified maintenance.

#### 4" DUAL PIPE JETS - 1 1/4" SUCTION - 1" DISCHARGE

MODEL	HP	TUBE & NOZZLE NUMBER	DEPTH TO WATER - Feet																
			30	40	50	60	70	80	90	100	110	120	130	140	180				
			CAPACITY - U.S. GALLONS PER HOUR																
MSH75	3/4	80160	900	800	720														
MSH75B		80130	630	630	630	630	590	502	447	368									
		80110	360	360	360	360	360	360	360	360	311	200	175	128					
MSH100	1	80170	1160	960	800														
MSH100B		80130	670	670	670	670	590	510	447	382									
		80110	400	400	400	400	400	400	400	400	360	232	208	195					
MSH150	1 1/2	80190	1690	1420	1150														
MSH150B		80150	720	720	720	720	720	717	661	606									
		80110	480	480	480	480	480	480	480	480	400	390	390	380	290				
MSH200	2	80210	1800	1690	1400														
MSH200B		80150	730	730	730	730	730	720	700	670	660	600	520	410	240				
		80110	480	480	480	480	480	480	480	480	460	400	390	360	320				

#### 2" SINGLE PIPE JETS - 1 1/4" SUCTION

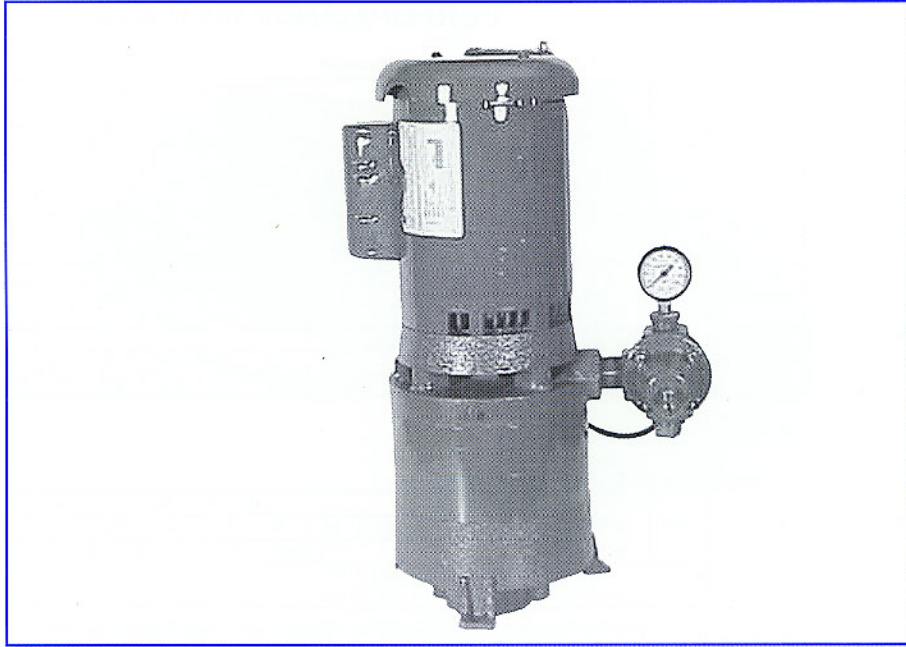
MODEL	HP	TUBE & NOZZLE NUMBER	DEPTH TO WATER - Feet																
			30	40	50	60	70	80	90	100	110	120	130	140	180				
			CAPACITY - U.S. GALLONS PER HOUR																
MSH75	3/4	80130	600	600	600	560	540	430	380										
MSH75B		80110	330	330	330	330	300	290	230	180	120	110							
MSH100	1	80130	630	630	630	600	580	460	390	300									
MSH100B		80110	360	360	360	360	360	360	360	320	310	290	270	140					
MSH150	1 1/2	80130	710	710	710	710	710	690	600	590									
MSH150B		80110	420	420	420	420	420	420	420	420	380	330	320	290	260				
MSH200	2	80130	720	720	720	720	720	710	700	630	630	580	460	390	210				
MSH200B		80110	430	430	430	430	430	430	430	420	420	410	390	370	330	300			

#### 3" SINGLE PIPE JETS - 1 1/4" SUCTION

MODEL	HP	TUBE & NOZZLE NUMBER	DEPTH TO WATER - Feet																
			30	40	50	60	70	80	90	100	110	120	130	140	180				
			CAPACITY - U.S. GALLONS PER HOUR																
MSH75	3/4	80165	900	800	720														
MSH75B		80130	630	630	630	630	590	502	447	368									
		80110	360	360	360	360	360	360	360	360	311	200	175	128					
MSH100	1	80170	1160	960	800														
MSH100B		80130	670	670	670	670	590	510	447	382									
		80110	400	400	400	400	400	400	400	400	360	332	208	195					
MSH150	1 1/2	80190	1690	1420	1150														
MSH150B		80150	720	720	720	720	720	717	661	606									
		80110	480	480	480	480	480	480	480	480	400	390	390	380					
MSH200	2	80210	1800	1690	1400														
MSH200B		80150	730	730	730	730	730	720	700	670	660	600	520	410	210				
		80120	480	480	480	480	480	480	480	480	480	460	400	390	360	320			

# Betta FLO

## MSV SERIES: VERTICAL MULTI-STAGE JET PUMPS



MSV Series are available in a wide range of models 3/4 thru 2HP. Betta Flo pumps are designed to provide trouble free economical service for years to come. Impellers are available in Brass or glass filled NORYL. Various jets are available for a wide range of applications. Pumps are close mounted to NEMA "J" electric motors.

### GENERAL INFORMATION

#### MSV - NORYL IMPELLERS

MODEL No.	ORDER No.	HP	SINGLE PHASE Volts	NPT INCH		WEIGHT Lbs
				SUCT.	DISC.	
MSV 75	1704	3/4	230/115	1 1/4	1	57
MSV 100	1708	1	230/115	1 1/4	1	59
MSV 150	1712	1 1/2	230/115	1 1/4	1	68
MSV 200	1716	2	230	1 1/4	1	74

#### MSV - BRASS IMPELLERS

MODEL No.	ORDER No.	HP	SINGLE PHASE Volts	NPT INCH		WEIGHT Lbs
				SUCT.	DISC.	
MSV 75B	1706	3/4	230/115	1 1/4	1	59
MSV 100B	1710	1	230/115	1 1/4	1	61
MSV 150B	1714	1 1/2	230/115	1 1/4	1	70
MSV 200B	1718	2	230	1 1/4	1	76

*Specifications are subject to change without notice.*

# Betta FLO

## MSV SERIES: VERTICAL MULTI-STAGE JET PUMPS

### QUALITY FEATURES

#### PRESSURE SWITCHES:

Heavy-duty pressure switch has been selected to conform to rigid specifications for precision, no-drift operation. Standard features include straight through wiring, rustproof cover and simple adjustment.

#### DIFFUSERS:

The unique diffuser is cast iron accurately-engineered, smooth water passages for peak efficiency and economy in operation.

#### IMPELLERS:

Closed impeller design. Impellers are Brass or molded Noryl for peak efficiency. This design assures smooth performance.

#### MECHANICAL SEALS:

Carbon/Ceramic faces, Buna elastomers, and 300 series stainless steel.

#### ELECTRIC MOTORS:

NEMA "J" standard single phase, 1/2 to 1-1/2HP are dual voltage, with voltage change switch, 2HP are 230V., 3500RPM, 60Hz, capacitor start, dual ball bearings, built in overload with automatic reset.

#### REGULATING VALVE:

Efficient heavy-duty regulator, adjustable to varying pumping conditions. Regulators are not required on shallow well application.

#### GASKETS:

All pumps feature the proper gasket for better sealing and simplified maintenance.

### PERFORMANCE RATINGS

#### 4" DUAL PIPE JETS - 1 1/4" SUCTION - 1" DISCHARGE

MODEL	HP	TUBE & NOZZLE NUMBER	DEPTH TO WATER - Feet															
			30	40	50	60	70	80	90	100	110	120	130	140	180	200		
			CAPACITY - U.S. GALLONS PER HOUR															
MSV75	3/4	80160	900	800	720													
MSV75B		80130	630	630	630	630	590	502	447	368								
		80110	360	360	360	360	360	360	360	360	311	200	175	128				
MSV100	1	80130	670	670	670	670	590	510	447	382								
MSV100B		80110	400	400	400	400	400	400	400	400	360	232	208	195				
MSV150		80190	1690	1420	1150													
MSV150B	1 1/2	80150	720	720	720	720	720	717	661	606								
		80110	480	480	480	480	480	480	480	480	400	390	390	380	290	210		
MSV200		80210	1690	1400	1260													
MSV200B	2	80150	730	730	730	730	730	720	700	670	660							
		80110	480	480	480	480	480	480	480	480	480	480	460	400	390	360	320	

#### 2" SINGLE PIPE JETS - 1 1/4" SUCTION

MODEL	HP	TUBE & NOZZLE NUMBER	DEPTH TO WATER - Feet															
			30	40	50	60	70	80	90	100	110	120	130	140	180	200		
			CAPACITY - U.S. GALLONS PER HOUR															
MSV75	3/4	80130	600	600	600	560	540	430	380									
MSV75B		80110	330	330	330	300	290	230	180	120	110	290	270	140				
MSV100	1	80130	630	630	630	600	580	460	390	300								
MSV100B		80110	360	360	360	360	360	360	360	320	310	290	270	140				
MSV150	1 1/2	80130	710	710	710	710	710	690	600	590								
MSV150B		80110	420	420	420	420	420	420	420	420	380	330	320	290	260	240		
MSV200	2	80130	720	720	720	720	720	710	700	630	630	580	460	390	210			
MSV200B		80110	430	430	430	430	430	430	420	420	410	390	370	330	300	280		

#### 3" SINGLE PIPE JETS - 1 1/4" SUCTION

MODEL	HP	TUBE & NOZZLE NUMBER	DEPTH TO WATER - Feet															
			30	40	50	60	70	80	90	100	110	120	130	140	180	200		
			CAPACITY - U.S. GALLONS PER HOUR															
MSV75	3/4	80160	900	800	720													
MSV75B		80130	630	630	630	630	590	502	447	368								
		80110	360	360	360	360	360	360	360	360	311	200	175	128				
MSV100	1	80130	670	670	670	670	590	510	447	382								
MSV100B		80110	400	400	400	400	400	400	400	400	360	232	208	195				
MSV150		80190	1690	1420	1150													
MSV150B	1 1/2	80150	720	720	720	720	720	717	661	606								
		80110	480	480	480	480	480	480	480	480	400	390	390	380	290	210		
MSV200		80210	1690	1400	1260													
MSV200B	2	80150	730	730	730	730	730	720	700	670	660							
		80120	480	480	480	480	480	480	480	480	480	480	460	400	390	360	320	



**Arizona**  
7600 West Olive Ave.  
Peoria, AZ 85345-7102  
1-800-966-5240 - WATTS LINE  
1-623-979-2177 - FAX

**California**  
2790 S. Railroad Ave.  
Fresno, CA 93725  
1-800-868-9755 - WATTS LINE  
1-559-497-8816 - FAX

**Florida**  
195 E. 3rd Street  
Zolfo Spring, FL 33890-0779  
1-800-994-3045 - WATTS LINE  
1-863-735-8202 - FAX

**Georgia**  
902 East Union Street  
Vienna, GA 31092  
1-800-786-7885 - WATTS LINE  
1-229-268-7868 - FAX

**Tennessee**  
5375 East Holmes Road  
Memphis TN 38118  
1-800-668-0009 - WATTS LINE  
1-901-795-6703 - FAX

**Texas**  
3107 Slaton Highway  
Lubbock, TX 79404  
1-800-745-5393 - WATTS LINE  
1-806-745-6668 - FAX

**N<sup>PC</sup> NATIONAL PUMP COMPANY, LLC**

**Delivering Vertical Turbine Pump  
Reliability, Dependability  
and Service Since 1969**