

NPSIV

Duplex System with PM Pump
Variable Frequency Drive
Pump Stations

Affordable VFD Technology in a Remarkably Unique Package

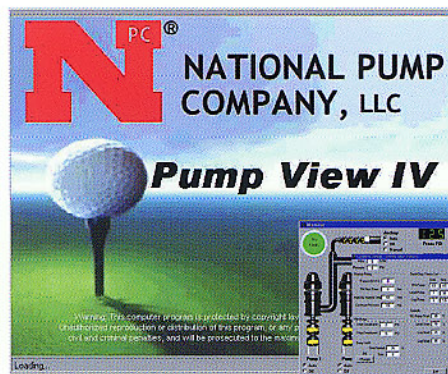
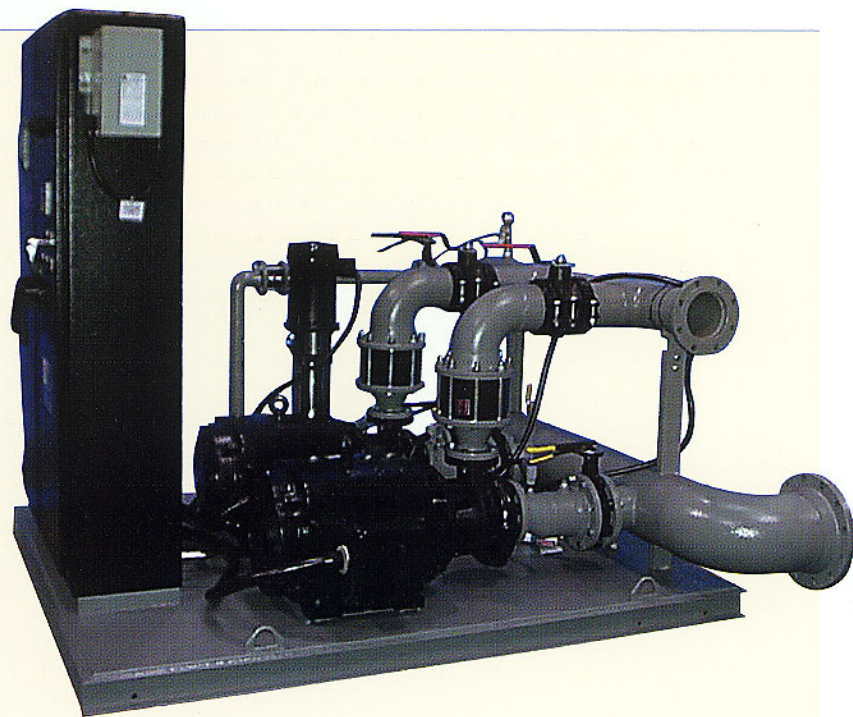


When it comes to duplex, variable frequency drive pump stations under 2000 GPM, the NPSIV has no equal. With a micro-processor based control system normally found only on systems costing twice as much, and standard features that you won't find on even the most expensive units available, National Pump Company has raised the bar in VFD pump station value. Combined with our windows based *Pump View IV* remote monitor and control software and a variety of communication options, the NPSIV has the technology and versatility to fulfill all of your constant pressure pump station requirements. The NPSIV's long list of available options as well as the many auxiliary equipment control features incorporated into it's processor and software as standard equipment, set

the stage that is completed by it's unique mechanical design. NPSIV pump stations are available in vertical turbine, centrifugal, and submersible models, with standard configurations that combine a 5 HP pressure maintenance pump with VFD driven main pumps up to 75 HP. Custom NPSIV stations and control panels are available in HP ranges up to 200 HP and in most International voltages and frequencies. Custom units can also convert single-phase power for operating large horsepower, three phase motors directly through the variable frequency drive in areas where three-phase power is unavailable. Control packages for deep well applications as well as retrofit packages for existing systems are also available in this comprehensive product line.

Quality Engineering

The NPSIV pump station was originally built to meet the demanding requirements of today's high tech golf course irrigation systems. Reliable performance, in an environment where even a few hours downtime can mean the difference in success and failure, was the cornerstone of our design criteria. Redundant emergency by-pass control features, field proven hardware and electronics, and a solid structural and mechanical platform make NPSIV the first choice when downtime is not an option. The standard NPSIV pump station piping and mechanical configuration is a testament to efficiency in engineering. Making the maximum use of a minimum amount of space without sacrificing practicality or serviceability, the well thought out flow characteristics of this compact unit can be easily overlooked. The small footprint of the NPSIV pump station incorporates a wide range of unique features that you will find only on pump stations built by National Pump Company. Coupled with National Pump Company's 24/7 technical support and service network, the NPSIV is the obvious choice for your industrial, municipal, or commercial application. From irrigation to potable water boosters, the NPSIV pump system has what it takes to succeed in the toughest applications.

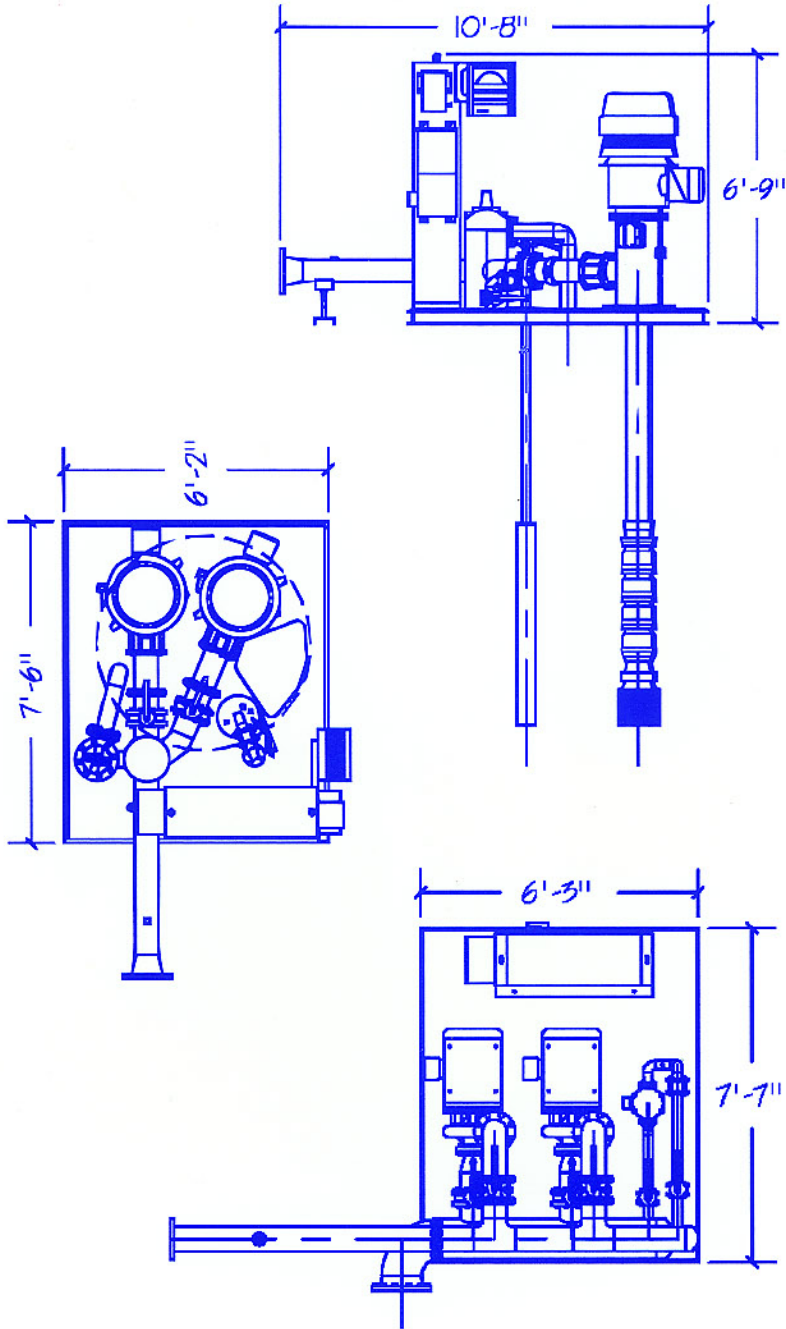


Attention to Detail

From engineering to testing, and all the way through delivery and start-up, no aspect of our production process escapes the high standards we set to assure the quality of our pump stations. From control panel design and construction in our U.L. listed panel shop, to fabrication, powder-coating, and assembly, we constantly monitor every detail of our workmanship. Each station we build undergoes a rigorous inspection and documentation process that is constantly reviewed and modified as we look for new ways to improve our products. Powder coating, dynamic testing to design capacity, calibration data backup, and startup analysis review by senior staff are just a few of the ways that National Pump Company sets itself apart from all other pump station manufacturers.

Quality Manufacturing

All NPS pump systems are built at our Olive Branch, MS manufacturing facility, where each and every station undergoes a rigorous inspection and documentation process throughout the production process. From control panel design and construction in our U.L. listed panel shop, to fabrication, powder-coating, and assembly, we constantly monitor the quality of our workmanship. As a final assurance, each station is completely assembled, powered up, and tested to design capacity prior to shipment. During this process, the station is fully calibrated which allows for trouble-free installation and start up once the station is delivered. All calibration data and detailed component information is then stored in a database for future reference and technical support should the need arise.



NPSIV features include:

- Standard model flow rates up to 2000 GPM
- Standard 5 HP pressure maintenance pump with main pumps up to 75 HP
- Custom units up to 200 HP and unlimited capacities
- NPSIV micro-processor control system
- Multi-function LCD operator interface terminal
- Adjustable startup ramp, PID tuning, and operating setpoint features
- U.S. and International voltages available, as well as single phase capability in all HP's
- U.L. and C.U.L Listed Packaged Pumping Systems and Control Panels
- Fabricated steel construction with polyurethane powder-coated finish
- Data Industrial flow meter with totalizer
- Individual pump isolation valves
- Pressure relief valve
- Emergency bypass controls (except single phase models)
- Integral auxillary pump controls, filter controls, and level controls

Standard Safeties Include:

- High discharge pressure
- Low discharge pressure
- Low level safety (if applicable)
- High pump temp safety (if applicable)
- Low low inlet pressure (if applicable)
- HMCP motor circuit protection and overload relays
- Incoming phase and voltage monitor
- Primary surge protection

Optional Features:

- **Pump View IV** remote monitor and control software
- Phone modem, line drivers, or radio modem communication packages
- Station heater
- Inlet and discharge isolation valves and zee pipes
- Intake pipe, foot valve and prime regulator
- Filtration and injection systems
- Step down transformer, load center, and power conditioner



Arizona
7600 W. Olive Ave., Peoria, AZ 85345-7102
(800) 966 5240 Fax: (623) 979 2177

California
2790 South Railroad Ave., Fresno, CA 93725
(800) 868 9755 Fax: (559) 497 8816

Florida
195 E. 3rd Street, Zolfo Springs, FL 33890
(800) 994 3045 Fax: (863) 735 8202

Georgia
902 East Union St., Vienna, GA 31092
(800) 741 2921 Fax: (229) 268 7868

Mississippi
11176 Green Valley Drive
Olive Branch, MS 38654
(866) 668 4914 Fax: (662) 895 1107

Texas
3107 Slaton Hwy., Lubbock, TX 79404
(800) 745 5393 Fax: (806) 745 6668



**Delivering Pump Systems,
Reliability, Dependability and
Service Since 1969**